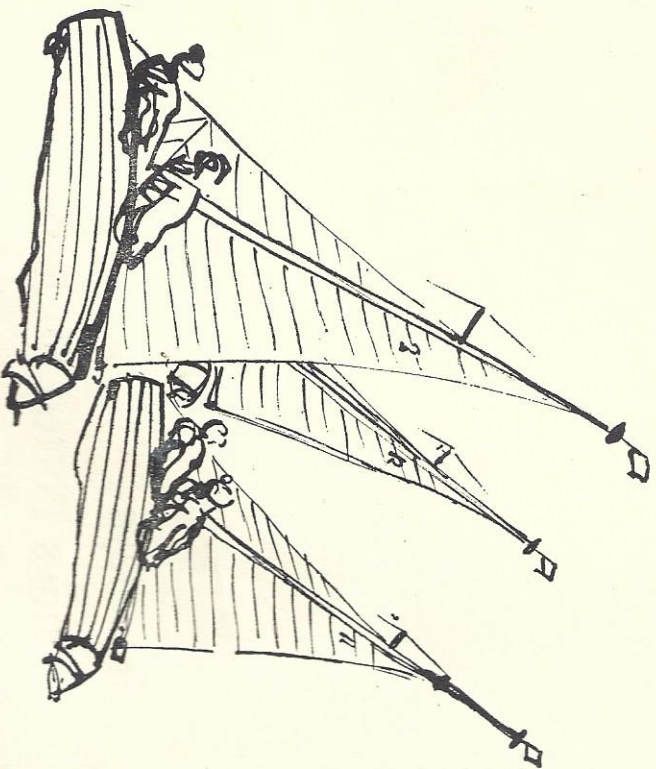


**WIVENHOE SAILING CLUB  
& 83rd International Cadet Squadron**

(Wivenhoe S.C.)

**AUGUST 6th, 1962.**  
**BANK HOLIDAY MONDAY.**

Commodore:  
**F. HODGSON, Esq.**



# REGATTA

Official Programme  
SIXPENCE

This may be a lucky  
number for you ! !

24

## Wivenhoe Regatta

—

MISS ELISABETH PAGET has kindly consented to open the afternoon's proceedings from the clubhouse at 2.30 p.m.

Salute of guns from the Club.

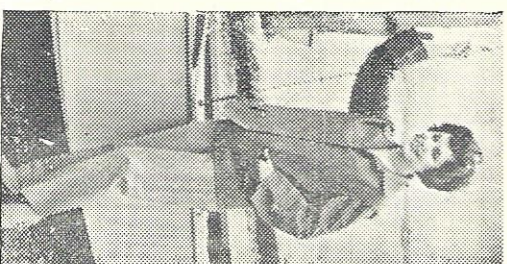
---

*Fitting out -*

*fashionwise - with*

### **ROCKALL** **SAILING WEAR**

Quality cut and fitness for the job — they are all virtues of ROCKALL Sailing Wear—and it's not expensive. This jacket in Sailcloth 52/6, Slacks, either normal or tapered 47/6.



---

**BAKERS** of COLCHESTER

---

Eastern Frozen

Foods Ltd.

Wivenhoe

Tel. Wivenhoe 589

*Packers and Wholesale Distributors  
of Frozen Foods*

“Essex Girl” Products

*Agents and Stockists for*

Smedleys

Youngs Potted Shrimps

ROSS

Fropax

Primecut

REGISTERED  
TYRE TRADERS  
CAR AND GIANT  
GREASING

MOTOR DEALERS  
ALL BEST BRANDS  
PETROL AND OILS  
COACH AND CAR  
HIRE SERVICE

## CEDRIC GARAGES

(Proprietor : A. C. Peck)

THE AVENUE ∴ WIVENHOE ∴ ESSEX

Catering arranged

Theatre tickets booked

29, 33, 35 and 41 Seater Coaches

Private Parties our speciality Tel. Wivenhoe 268

## A. E. SPARROW & SON

*Builders and Decorators*

THE QUAY - - WIVENHOE

Tel. Wivenhoe 292

ALL WORKS UNDER PERSONAL SUPERVISION

4

---

---

THE

COLCHESTER MORRIS MEN

will be dancing on the Quay for  
your entertainment during the  
afternoon

When in Wivenhoe

Visit

## The Rose & Crown

*The only Licensed House on the Waterfront*

“Bill and Alice”

are pleased to meet old friends and new during  
permitted hours

5

# ALRESFORD SAND & BALLAST Co. Ltd.

ALRESFORD CREEK Nr. Colchester

Telephone : WIVENHOE 341 & 494

*For Prompt Deliveries of all Grades of*  
WASHED SAND & STONE

HOGGIN for DRIVES & FOOT PATHS  
also READY MIXED CONCRETE

To any Specification

## KENT BLAXILL & CO. LTD.

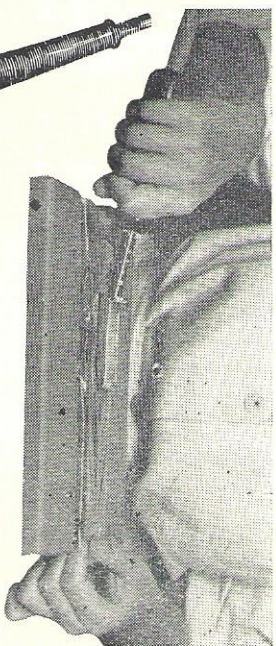
**Builders** ★ **98-104 HIGH STREET**  
Paints and Decorators' Materials,  
Ironmongery, Plumbers' Materials,  
Glass, Tools and Hardware.

**Merchants and** ★ **60 HIGH STREET**  
Sanitary Ware, Fireplaces and  
Heating appliances.

**hardware** ★ **3 HIGH STREET**  
China, Artists' Materials and  
Household Goods

**dealers** ★ **CULVER STREET**  
Heavy Builders' Materials.

Telephone : COLCHESTER 6371



# SEALING IS SIMPLE

With the  
**LYTZE HEAT SEALING IRON**

Just right for all types of film used in packaging your product. Simple to use, light and compact. Easily interchangeable, standard Elements available and our Technical Staff will be pleased to advise you on the best Element to suit your film.

Write now for full details of the Lytze Electric Heat Sealing Iron giving Particulars of the type of film you use.



Discounts given for quantities.  
Exports enquiries invited.  
Barrier Tapes stocked for use with Polythene and Thermoplastic films.

**LYTZE PRODUCTS LTD.**  
BRIGHTLINGSEA, ESSEX. Phone : BRIGHTLINGSEA 14

FIRELIGHTERS, EDGETRIMMERS, SEALING IRONS,  
WIRE STRIPPERS, JAR RACKS, CAPACITY WORK

# R. & C. M. RILEY

HIGH STREET, WIVENHOE

High Class Groceries and Provisions

Wiltshire Bacon our speciality

Cheese for every palate

*Daily Deliveries over a wide area Personal Service*  
FROZEN FOODS Phone : Wivenhoe 324

## For Your Outdoors

Binoculars

Tents

Camp Kit

Marquees for Hire

**Marcamp**  
LTD

MARCAMP Ltd. Phone : Colchester 77588

8

For

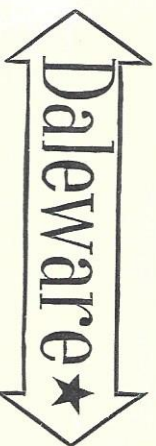
# GOOD GREEN & WRIGHT

LIMITED

57 HIGH STREET, COLCHESTER

Glasses on loan Free for Wedding Receptions, Parties, etc.

Telephone Colchester 73745



*Super Quality Cast Aluminium  
Kitchenware*

Better looking . . .

Better cooking . . .

*and made in Brightlingsea  
to last a lifetime !*

EASIPOWER APPLIANCES LIMITED  
30 HIGH STREET, SOUTHAMPTON  
Factories at New Street, Brightlingsea, and at Hythe, Hants.

Telephone Wivenhoe 491

C. F. TAYLOR

*Baker - Confectioner - Caterer*

East Essex Bakery

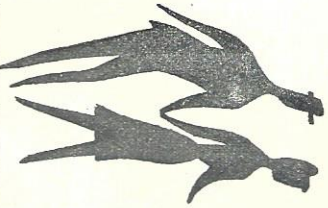
HIGH STREET, WIVENHOE, ESSEX

9

---

# 400 square miles

of Colchester and East Essex have Co-operative stores and shops. You go one better wherever you go shopping Co-operative!



**Co-operative**

Colchester and East Essex Co-operative Society Ltd.

---

**Better Swimming Pools at  
Lower Cost**

50,000 gallon capacity reinforced concrete Pools  
complete with Filtration Plant from £5,000

**VAUGHAN & BLYTH Ltd.**

*Building Contractors*

206 Mersea Road, Colchester. Phone 4458

10

## On the Quay during the Afternoon

Roll-a-penny

Treasure Island

Find the Pain

Toffee Apples

Soft Drinks, Sweets

Guess an Egg

Guess Weight of Coal

Gold-fish

Bottle Stall

Steady Hand

Fishing for Bottle

—and many others

---

## GRAND RAFFLE

Draw at end of Sailing Programme

---

**Teas available in Legion Hall**

**from 3 to 5.3.0 p.m.**

11

---

---

# W. A. RAVEN

HIGH STREET, WIVENHOE  
AND NOW ALSO AT STANLEY ROAD

Phone 553

**QUICK FROZEN FOOD**

HIGH CLASS GROCERIES, PROVISIONS, WINES & SPIRITS, Etc.

**DRY CLEANERS**

## OLD HEATH LAUNDRY

LIMITED

**CARPET CLEANING**

Phone Colchester 73560

# F. A. PARNELL

Motor and Agricultural Engineer

**WIVENHOE CROSS**

Phone Wivenhoe 596

---

---

## PHILANTHROPIC PHIL

is on the Quay

10/- if you can recognise Philanthropic Phil first.

Approach, programme in hand and say, "You are Philanthropic Phil," and if you are right you will get the prize.

---

---

### CLUB RACING TROPHIES

SYKES TROPHY for Wivenhoe O.D.'s. only, presented by Mr. W. Sykes.

MAY MUG handicap trophy, presented by Mr. and Mrs. C. May.  
CHARLES SAINTY MEMORIAL CUP. Handicap trophy presented by Mr. C. Sainty.

ROSE & CROWN BOWL for lady members, presented by Mr. H. Downes.

CADET CUP for club members under 18, presented by Mr. G. R. Gifford.

GLOZIER FITTING-OUT TROPHY, presented by Mr. T. H. Glozier.

ERNIE TURNER SHIELD, presented by Mr. E. Turner.

THE DUCKS CUP, presented by Mr. D. T. Oxtan.

COLNE & BLACKWATER CHAMPIONSHIP CUP, presented by Mr. F. M. Haward.

MOSS CUP, presented by Mr. Ralph Moss.

GLOZIER LAYING-UP TROPHY, presented by Mr. T. H. Glozier.

MOSS CUP for Best Cadet of year.

THE HALF-WAY CUP, presented by Mr. & Mrs. R. G. Lord for Y.W.G.P. 14 Class.

THE C. J. CUP, presented by Mr. C. J. Josephs for the Annual Cadet Team Races.

## Peatling & Cawdron Ltd.

*Wholesale and Retail  
Wine and Spirit Merchants*

**HIGH STREET, WIVENHOE**

*Telephone 307*

AGENTS FOR:—Greene King, Trumans, and Ind Coope Ales  
Personal Service : Why not join our Christmas Club ?  
Glasses on loan Free for Weddings, Parties, etc.  
Daily Deliveries throughout the District—No Charge

## H. C. & I. K. NEWMAN

*General Household Stores*

**The Corner House, East Street, Wivenhoe**

Phone : Wivenhoe 433

HARDWARE, CHINA, GLASS, FANCY GOODS  
AND TOYS, ETC.

Local Stockists of VALSPAR and DU-LUX PAINTS

Gifts for all occasions Join our Christmas Club now

### “WIVENHOE ONE DESIGN” CLASS

Designer Dr. W. Radcliffe.

The Wivenhoe one design class was started in 1935, and five boats were racing the following year, so that any boat carrying the numbers one to five must now be more than a quarter of a century old. No. 2, *Duet*, originally owned by the designer Dr. Radcliffe, and the late Mr. Peter Pawsey, No. 3, *Ranger*, built for Mr. Hector Barr, and the well known Wivenhoe sailmaker, and No. 4, *Vivian*, built for the Berry brothers, are still racing with the class, and the proof of the one-design class is that these old boats can still win races without any handicap. When the class was designed it was thought that the existing one-design classes on the East Coast, such as the Brightlingsea one-designs and the West Mersea Sprites, were either too big for our river or unsuitable for lying at moorings here. A year or two later the same class was adopted by the Stour sailing club at Manningtree, and some of the old Stour boats have now rejoined the Wivenhoe class, notably *Peewit*, which has always had a good racing record. Other boats have been sold away, and have found home at other ports on the East Coast, and on the Norfolk Broads.

The very rapid increase in other one-design classes all round the British Isles—in the last few years shows the soundness of the policy, for not only do boats of the same design sail on equal terms, but since fittings are standardised the cost of each boat is much less. The Wivenhoe boats were built to a high specification, with manganese bronze fittings which would now be prohibitive, and other materials such as plastics are available today which would make them much lighter, so it is doubtful whether any more will be built. It is for this reason that the club has also adopted the International Cadet and Y.W.G.P. 14 classes.

## T. B. GLOZIER

**HIGH STREET, WIVENHOE**

*Hairdresser*

TOBACCONIST CONFECTIONER

Walls Ice Cream

Wivenhoe 516



## WIVENHOE ONE DESIGNS.

Sail No.	Name	Colour	Owner
2	Duet	White	T. Giles
3	Ranger	Varnish	R. Riley
4	Vivian	Varnish	D. Green
6	Pegasus	Varnish	W. Cracknell
7	Peewit	White	G. Foreman
8	Puffin	Yellow	M. Pettitt
11	Red Capriol	Varnish	G. Fisher
12	Sapphire	Blue	C. J. Josephs
13	Toucan	Yellow	Mrs. B. Williams
17	Elise	Red	A. Green

## J. G. BARRELL

*The Newsagent Confectioner & Tobacconist*

HIGH STREET, WIVENHOE Phone 426

For all your requirements of Periodicals, Smoking Requisites,

Ice Cream, Library, Stationery, Confectionery, etc.

Telephone No. Wivenhoe 287 Private Residence Wivenhoe 308

## P. J. CHANNEY

YACHT OUTFITTER AND GENERAL IRONMONGER

HIGH STREET, WIVENHOE

Stockist of Paints and Varnishes for Yacht work

Stockist of G.E.C. and Ediswan Electrical Equipment

## THE COURSE CARD OF WIVENHOE SAILING CLUB

### GENERAL INSTRUCTIONS

#### Starting Lines

The normal starting line is opposite the Clubhouse.  
The Alresford starting line consists of the telegraph pole and white spar on the Alresford Bank in line, or if a launch is available, the mast of the launch and 23 black buoy in line. Red buoy 26 is the limit mark in either case.

#### Notification of courses

The number of the course to be sailed will be shown at the starting line before the start of each race.  
Recalls, Shortened Course and Cancelled Race Signals will be made in accordance with Y.R.A. Rules. If a race is cancelled when boats are out of visual signalling range, an additional two guns will be fired.

A chart of the River Colne showing appropriate marks is overleaf.

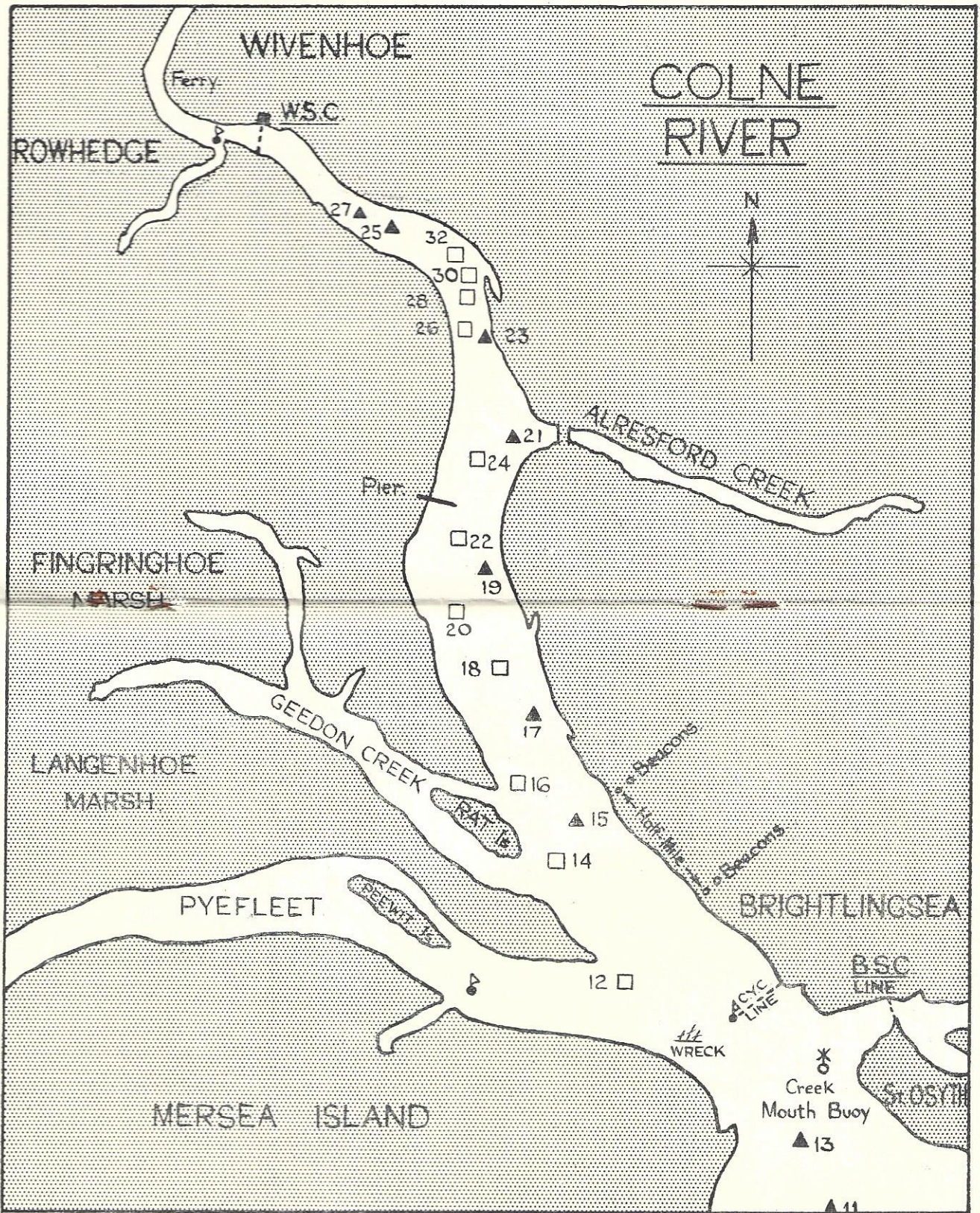
### COURSES

#### From Wivenhoe Line

1. 28 Red Buoy Stbd., 21 Black Stbd., 24 Red Stbd., 28 Red Port, Upstream Marker Stbd. Twice Round.
2. 21 Black Buoy Stbd., 24 Red Stbd., Upstream Marker Stbd. Twice round.
3. Upstream Marker Stbd., 28 Red Stbd., 21 Black Stbd., 24 Red Stbd., 28 Red Port. Twice round.
4. Upstream Marker Port, 24 Red Port, 21 Black Port. Twice round. Shortened course for above—25 Black Stbd., and return over line.
5. 21 Black Buoy Stbd., 22 Red Port, 19 Black Stbd., 20 Red Port, 18 Red Port, 21 Black Port. Return direct over line.
6. 30 Red Buoy Stbd., 29 Red Stbd., Upstream Marker Stbd. Twice round.
7. 25 Black Buoy Stbd., Upstream Marker Stbd. Twice round.
8. Upstream Marker Port, 25 Black Port. Twice round.

#### From Alresford Line

9. 21 Black Buoy Stbd., 22 Red Port, 19 Black Stbd., 20 Red Port, 18 Red Port, 21 Black Port, 23 Black Port, first round only. Twice round, finishing direct over line on second round.
  10. 21 Black Buoy Stbd., 18 Red Stbd., 20 Red Stbd., 19 Black Port, 22 Red Stbd., 21 Black Port, 23 Black Port, first round only. Twice round, finishing direct over line on second round.
  11. 21 Black Buoy Stbd., 24 Red Stbd., 28 Red Stbd. Twice round.
  12. 28 Red Buoy Port, 24 Red Port, 21 Black Port. Twice round.
- Shortened Course for Courses 9 to 12: 21 Black Stbd., and finish direct over line.



## WIVENHOE SAILING CLUB REGATTA

MONDAY, 6th AUGUST, 1962

High Water 4.26 p.m.

### Sailing Programme

Course 1. Pennant 1. From C.Y.C. line at Brightingsea, obeying all navigational marks to Wivenhoe S.C. Marker Buoy left to port thence downstream to first Red Buoy, left to port, and finish over W.S.C. Line.

Course 2. Pennant 2. From C.Y.C. Line at Brightingsea, obeying all navigational marks, and finishing over W.S.C. Line.

Course 3. Pennant 3. From C.Y.C. Line at Brightingsea, 12 Red Port, Mark in Pyelleet Port, 12 Red Port, thence obeying all navigational marks and finishing over Wivenhoe S.C. Line.

Course to be decided on day of race. Helmsmen are requested to keep behind the starting line between the five minute gun and the start of their Class

#### FROM C.Y.C. LINE

1. B.O.D. Class Craft. Start 2.30 p.m. Y.
2. Handicap for all Open Boats, Cruisers up to 10 tons. Start 2.35 p.m. No. 1.
3. Y.W.G.P.'s. Start 2.40 p.m. A.
4. Hornets. Start 2.45 p.m. 3rd. Sub.

#### FROM W.S.C. LINE

5. Wivenhoe O.D. Start 3.00 p.m. T.
  6. International Y.W. Cadet Class. Start 3.05 p.m. No. 1
  7. Handicap for all open boats. Start 3.10 p.m. No. 2.
  8. Y.W.G.P.'s. Start 3.15 p.m. A.
  9. All-in Handicap Race for Daily Mirror Trophy. Time of start and course to be announced on day of race.
- Races will be arranged for any class of five or over on request.

#### CONDITIONS OF ENTRY

1. All races sailed under R.Y.A. rules but with regard to rule 12, a recall gun will be fired after the start if any yacht is over the line. Recall numbers will not be used. Any yacht over the line when the signal to start is made, but failing to return to the satisfaction of the Race Officer will be disqualified.
2. The Committee reserve the right to make any alteration in the programme that may be necessary. Any decision made by the Committee shall be final and binding.
3. No race unless two start. The committee reserve the right to amalgamate such craft with another class. Second prize if four start, third prize if six start.
4. After the first ten minute gun, all boats will be under R.Y.A. Rules.
5. Entries, together with the appropriate fee, to be sent to Hon. Sailing Secretary, Wivenhoe Sailing Club, Wivenhoe by Friday, 3rd August, 1962.

MENSWEAR

HOSIERY

FOOTWEAR

# BAILEY'S

(M. E. Witton)

46 HIGH STREET, WIVENHOE

KNITWEAR

LINGERIE

## THE WYVENHOE JAZZ BAND

will perform for your pleasure  
on the Quay during the after-  
noon

### Quilter Mineral Water Ltd.

PARSONS HEATH

COLCHESTER

Tel. 72365

As supplied to the Wivenhoe Sailing Club and

Leading Hotels in Wivenhoe