

Take a walk down ‘The Street’ in 1918

**Starting at 140 The Park Hotel.** Built in 1862. Those living below it are called ‘downstreeters’. As we pass, a commercial salesman is arriving from the station to stay a few nights. He has a leather bag containing samples he hopes to sell.

**134 The Essex Regiment Recruitment Office** This is where the young men of Wivenhoe have been enlisting for the Great War.

**128 Gothic House** A detached house. The Conservative & Unionist Party headquarters for Harwich & District. Union Jacks are flying.

**124 Fernbank & 126 Westcott** You might hear the clunk of bowls from the bowling green behind these houses.

**118 St Kilda & 122 Dagmar** These names reflect the large yachts built in Wivenhoe at the turn of the century. There is an anchor above one front door.

**The National School & Schoolhouse** sited where the present Library is now. You can hear the noise of boys playing in the school yard and street .



Church of St. Mary the Virgin



The churchyard is quiet now, filled with headstones but it is said there will be a

war memorial built in 1921 with names of those from Wivenhoe killed in the Great War. (The Roll of Honour now states over 300 people from Wivenhoe served in this War).

**4 London House** Arthur Garrett has corsets, liberty bodices & the latest fashions on show. It is expensive to get the omnibus into Colchester so he has plenty of regular customers.

**Apothecary/Chemist** on the corner of East Street with bottles of coloured liquids in the window & enormous jars on the shelves inside.

Cross to the other side of the High Street

Here you take in the smell freshly baked bread coming from **Cracknell’s at no.5** ( see photo of the Bakers on map) or from **Last’s Bakery at No. 13.**

Watch now as you cross **Blyths Lane – Blood Alley** there could be ‘cow pats’ as the abattoir is behind the next row of shops.

**21 Asa Beckwith’s shop** on the corner has just closed, it was not the best place to be selling his milk and butter, but it was clean inside.

**23 David Bones Cycle Repair shop** watch out as there is a bicycle outside waiting to be repaired, it is one of the new type with inflatable tyres. Cycles had

**88 The Telephone Exchange** This is a listed building, one of the oldest sites in the High St. Less than 50 people had a telephone at this time.

**74 Malting House** once Belgrave House. (It was to become the home of Albert Turner & his wife in 1930. He was the famous skipper of King George V’s yacht ‘Britannia’).

**70 The White House** is the headquarters of the Liberal Party. In 1906 it was the scene of great celebrations when Levy Lever defeated the Conservatives & became MP for this area.

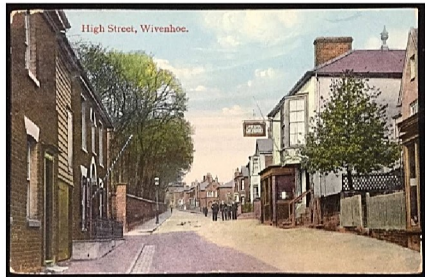
**68 The Post Office** built around 1820 where you can post a letter through the wall. The telegraph boy is just coming out, will it be bad news for someone?

Cross Queen’s Road to

**66 (now Haart’s Estate Agents) is an Ironmongers** and as the door is open you can smell the paint and turpentine of the shop owned by Alfred Ellis. There are brushes & a tin bath outside

**60 The Greyhound Pub** This will be busy later when the older men return from their day’s labour in the boatyards & in the fields. Some think it is better to drink beer than water, even though the new water tower was erected in 1901.

**52 Philip Chamberlain’s Boot Shop** Will Philip be wearing his yellow silk waistcoat to show his support



recently become an accessible way for both men & women getting around.

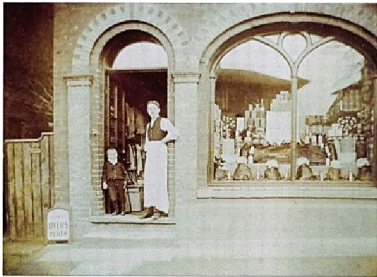
**31 Parr’s Bank** Mr. Morris will be opening today as it is Saturday. Only the well off will have need to visit him. It will open again on Wednesday.

**33 George Slaughter Newsagent** you can buy the Essex County Standard here with news of local heroes in the Great War and also those who have been killed or wounded.

**37 James Moore Grocers** The door is open, you can see the trap door hooked back, as you go up the steps the smell of roasted coffee hits you, the display of Earl Grey tea tells you it is a high class shop where you can’t get goods on tick. Jimmy & his brother stand behind a long polished counter wearing their long white aprons.

**41 The Grosvenor Hotel** Built in 1865, it became popular with people arriving on the train from London visiting the expensive yachts on the quay. It was a favourite pub with the shipwrights, and rumour has it there was a brothel upstairs.

Cross over the railway line to



for the Liberal Party today? Deck shoes for sailing are hung outside, boots and shoes inside.

**50 Barclays Bank** (Now Wyvern Stores) The bank is closed today but will be open on Tuesday & Friday.

**48 Stacey Wood – Grocers** It is a sunny day, the blind is over the window. Up the steps inside he is bagging up sugar, flour & tea for a young child who has been sent on an errand, whilst older women are standing chatting.

Over the Railway Line to

**40 The Old Manse** this imposing house is where the Congregational Minister now lives.

**38 Little Wick** this is the home of the newly founded UDC (Urban District council) some of our most respected members of the community meet here. In the stable behind, Mr. Watchman is getting his cart ready to spray water on the dusty roads. The fire barrow is kept here too.

**The Falcon Pub** Memories of the Morris Dancers in the yard at the side last May. An auction is being held here today, so it is noisy & busy. Just one of our many Wivenhoe pubs.



**43 G.W. Morris Butchers shop** now closed but I remember the sawdust on the floor & the smell of raw meat.

**Through the arch is Jolliffe’s Yard** Coal is being brought up from the store on the marshes and it is about to arrive, two ladies are waiting ready to collect the coal with their prams.

**61 Tilford Glozier Hairdresser** Saturday is a busy day, there are men waiting inside for their new haircut & to buy tobacco. The social place for gossip.

**Walking back up the hill** On the left is the long brick wall with tall trees behind. This is the boundary wall of **Wivenhoe Hall**. (photo on map) Built in about 1450 by the Earl of Oxford and later home of the Corsellis family. It is in a sad state now. (In 1927 it was burnt down & the land was sold).

**103 The Folly** Hidden behind the wall & trees is where the residents of Wivenhoe Hall practice their archery.

Cross over De Vere Lane to

**1 The Avenue The Gatehouse** to Wivenhoe Hall built in 1864. The plaque bears the initials NCC (Nicholas Caesar Corsellis).

